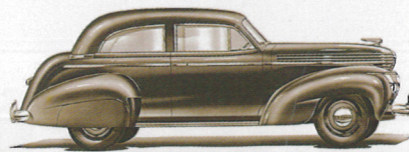


SLEEK PREWAR DESIGNS

THE DISTINCTIVE GRAHAMS



Hemmings

CLASSIC CAR

THE DEFINITIVE ALL-AMERICAN COLLECTOR-CAR MAGAZINE

MARCH 2015 #126



THE TESTING TEMPLE
GM'S PROVING GROUND



BONUS BUILT BRUISER
THE 1950 FORD F-3

RETRACTABLES!

THE HISTORY OF
FORD'S HIDE-AWAY
HARDTOP **SKYLINER**



RESTORATION PROFILE
PART III — INCREDIBLE REBUILD
OF THE 1940 DODGE D-14
ENTERS ITS FINAL PHASE



PLUS:

- 1937 STUDEBAKER
- 1952 HUDSON WASP
- CARBURETOR ICING